



# SERIES G2 PRODUCT DATA SHEET

MODEL	PART NUMBER	MOTOR TYPE
SG2 09-A-3.0H-10DL-WR00-MC	105330	Hydraulic 3.0 ci
SG2 09-C-3.0H-10DL-WR00-MC	105335	Hydraulic 3.0 ci
SERIAL NUMBER	INSPECTED BY	DATE

ENGINEERING DATA		
Rated Pulling Force:	9000 lbf	4082 kgf
Drum Barrel Diameter:	4 in	101.6 mm
Drum Flange Diameter:	8.24 in	209.3 mm
Drum Width:	9.95 in	252.7 mm
Evaluated Rope Diameter:	3/8 in	9.5 mm
Maximum Wire Rope Diameter:	1/2 in	12.7 mm
Minimum Wire Rope Breaking Strength:	15100 lbf	6849 kgf
Maximum Layers of Wire Rope:	4 with 3/8in rope	
Gear Train:	Planetary	
Gear Reduction:	36:1	
Mounting Bolt Size:	M12 X 1.75 Class 8.8	
Mounting Bolt Torque:	46-51 lbf-ft	63-69 Nm
Duty Cycle (per SAE J706 section 6.2):	694 ft	211.5 m
Approximate Shipping Weight:	85.3 lbf	38.7 kg
Brake Type:	Automatic Disk Brake per SAE J706 Sec. 4.2	
Sealing:	IP68/IP69K	
UV Rating:	1200 kJ/m <sup>2</sup> per ASTM G154	
Corrosion Resistance:	408 hrs per ASTM B117	
Operating Temperature:	-40°F to 158°F (-40°C to 70°C)	
Decibels:	85.5 dB	
EMC Emissions:	N/A	
EMC Immunity:	N/A	



## DESCRIPTION

SeriesG2 Hydraulic winches provide a more robust and serviceable design with a stronger gear train for increased performance. Less maintenance and less downtime means more work.

## ACCESSORIES

SeriesG2 winches represents an all-new level of modular design, customization, and versatility, no matter the application. Please visit [www.warn.com/industrial](http://www.warn.com/industrial) for all available accessories and options.

## STANDARDS COMPLIANCE

2006/42/EC - EN ISO 12100:2010, EN 60529:1992+A2:2013, EN 14492-1:2006\*  
 2014/30/EU - EN 50498:2010, ISO 7637-2:2011, CISPR 25  
 2011/65/EU - EN 63000:2018

Also complies with:  
 SAE J706

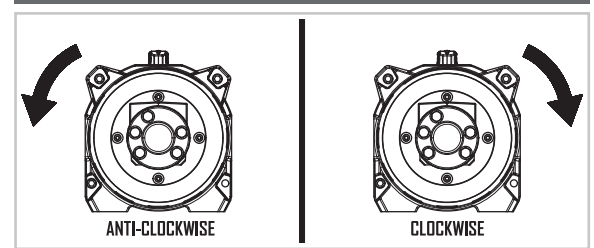
\*Conforms with exceptions

## PERFORMANCE BY LAYER

DRUM LAYER	LINE LOAD*			LINE SPEED 10 GPM		LINE SPEED 15 GPM	
	lbf	kgf	kN	ft/min	m/min	ft/min	m/min
1	9000	4082	40	27	8.3	40	12.2
2	7683	3485	34.2	32	9.7	47	14.3
3	6702	3040	29.8	36	11.1	54	16.4
4	5943	2696	26.4	41	12.6	61	18.4

\*Never exceed the Rated Pulling Force. Installation of a Rated Capacity Limiter is recommended

## DRUM ROTATION

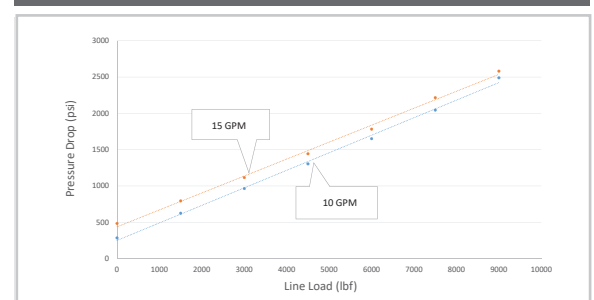


As viewed from motor end

## FIRST LAYER PERFORMANCE

LINE LOAD		PRESSURE DROP AT 10 GPM		PRESSURE DROP AT 15 GPM		DUTY CYCLE
lbf	kgf	psi	BAR	psi	BAR	min/10min
0	0	284	19.6	483	33.3	N/A
1500	680	624	43.0	794	54.7	N/A
3000	1361	963	66.4	1115	76.9	N/A
4500	2041	1303	89.9	1443	99.5	N/A
6000	2722	1651	113.8	1782	122.9	N/A
7500	3402	2045	141.0	2215	152.7	N/A
9000	4082	2489	171.6	2581	177.9	N/A

## FIRST LAYER PERFORMANCE





# SERIES G2 PRODUCT DATA SHEET

MODEL	PART NUMBER	MOTOR TYPE
-------	-------------	------------

SG2 09-A-3.0H-10DL-WR00-MC	105330	Hydraulic 3.0 ci
SG2 09-C-3.0H-10DL-WR00-MC	105335	Hydraulic 3.0 ci

## DRUM LAYER CAPACITY PER EVALUATED ROPE DIAMETER

DRUM LAYER	DRUM LENGTH							
	6.5"		8"		10"		12.5"	
	ft	m	ft	m	ft	m	ft	m
1	16	4.9	20	6.1	25	7.6	35	10.7
2	35	10.7	43	13.1	54	16.5	75	22.9
3	56	17.1	70	21.3	88	26.8	122	37.2
4	80	24.4	100	30.5	125	38.1	175	53.3

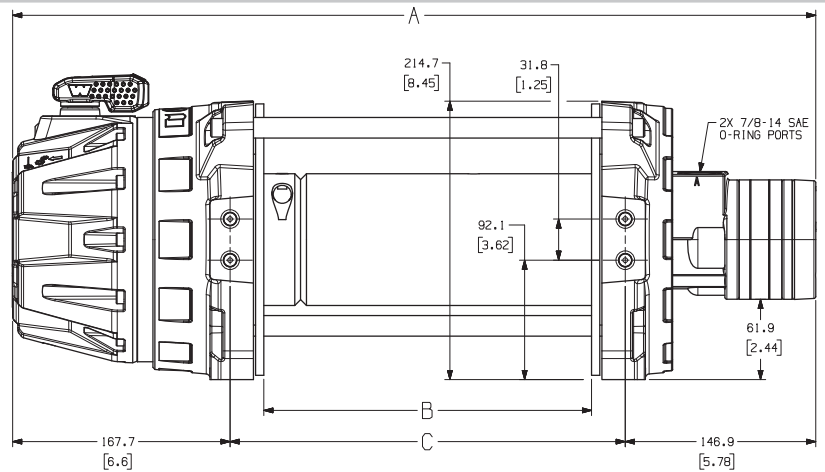
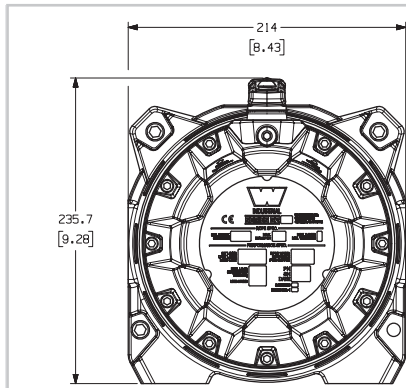
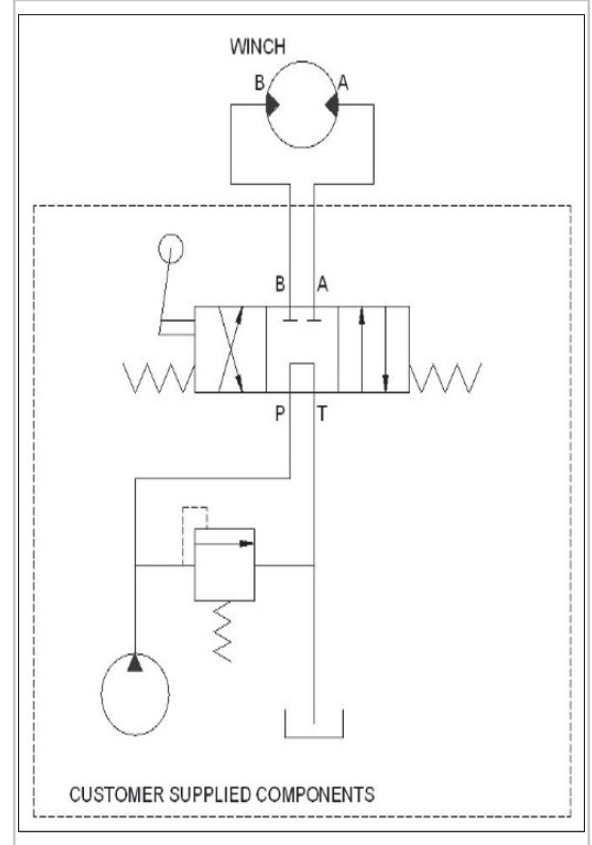
## TOTAL DRUM CAPACITY

ROPE DIAMETER	DRUM LENGTH							
	6.5"		8"		10"		12.5"	
	ft	m	ft	m	ft	m	ft	m
3/8	80	24.4	100	30.5	125	38.1	175	53.3
7/16	75	22.9	100	30.5	100	30.5	150	45.7
1/2	60	18.3	60	18.3	75	22.9	100	30.5

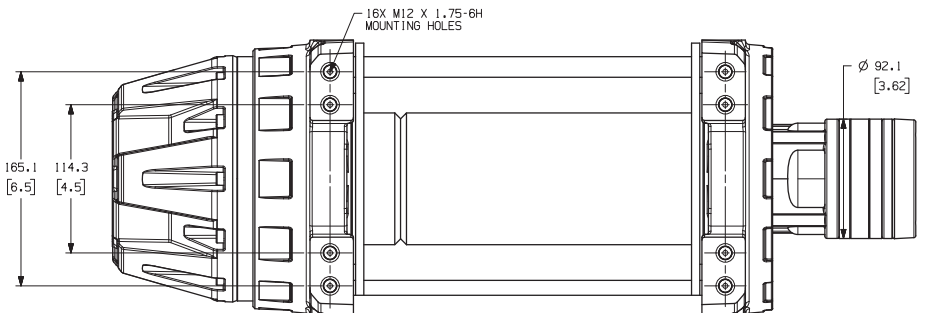
## HYDRAULIC SYSTEM SPECIFICATIONS

Maximum System Pressure:	2500 psi	172 BAR
Maximum Motor Pressure Drop:	2398 psi	165.3 BAR
Maximum Rated Input Flow:	15 GPM	57 LPM
Maximum Rated Input Speed:	1256	RPM
Control Valve Type:	Tandem Center	

## CONTROL VALVE SCHEMATIC



DRUM SIZE	UNITS	A	B	C
6.5" DRUM	mm	530.4	163.8	215.8
	in	20.88	6.45	8.50
8" DRUM	mm	568.5	201.9	253.9
	in	22.38	7.95	10.00
10" DRUM	mm	619.3	252.7	304.7
	in	24.38	9.95	12.00
12.5" DRUM	mm	682.8	316.2	368.2
	in	26.88	12.45	14.50



**WARN INDUSTRIES, INC**  
INDUSTRIAL PRODUCTS

Customer Service (North America): 1.800.543.9276  
Customer Service (International): 1.503.722.3008  
www.warn.com

12900 S.E. Capps Road,  
Clackamas, OR USA 97015

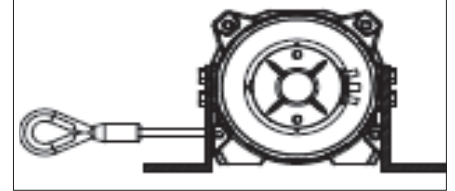
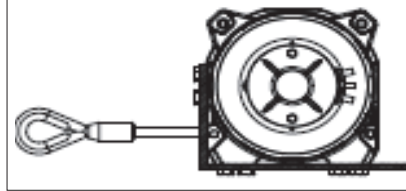
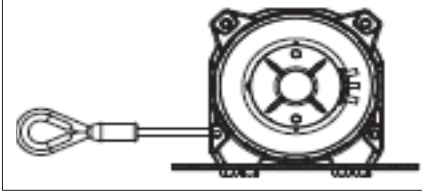


## MOUNTING CONFIGURATIONS

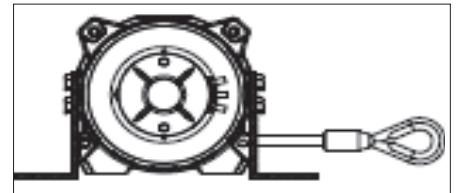
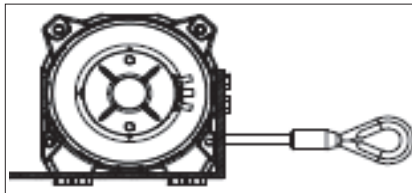
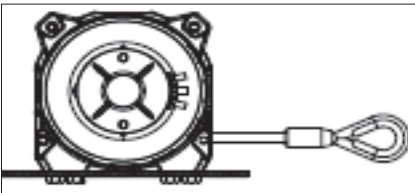
MODEL	PART NUMBER	MOTOR TYPE
SG2 09-A-3.0H-10DL-WR00-MC	105330	Hydraulic 3.0 ci
SG2 09-C-3.0H-10DL-WR00-MC	105335	Hydraulic 3.0 ci

ALL MOUNTING MUST BE OBSERVED FROM MOTOR END

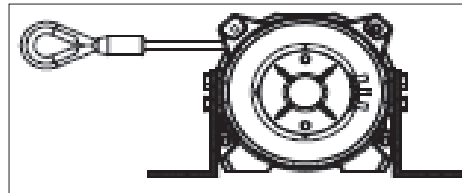
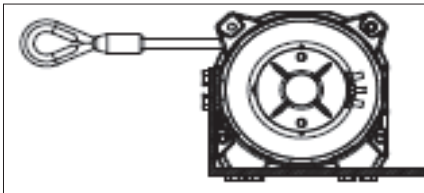
### FEET DOWN, ROPE UNDER DRUM, COMING IN FROM THE LEFT (DUL) - ANTI-CLOCKWISE ROTATION



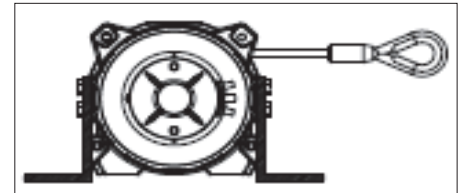
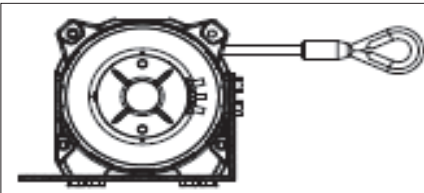
### FEET DOWN, ROPE UNDER DRUM, COMING IN FROM THE RIGHT (DUR) - CLOCKWISE ROTATION



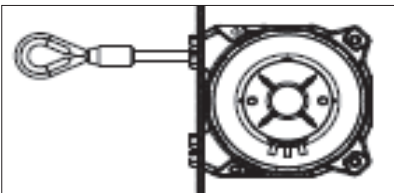
### FEET DOWN, ROPE OVER DRUM, COMING IN FROM THE LEFT (DOL) - CLOCKWISE ROTATION



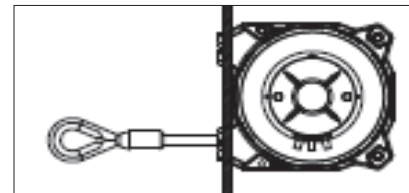
### FEET DOWN, ROPE OVER DRUM, COMING IN FROM THE RIGHT (DDR) - ANTI-CLOCKWISE ROTATION



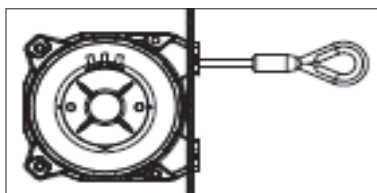
### FEET FORWARD, ROPE OVER DRUM, COMING IN FROM THE LEFT (FOL) - CLOCKWISE



### FEET FORWARD, ROPE UNDER DRUM, COMING IN FROM THE LEFT (FUL) - ANTI-CLOCKWISE



### FEET FORWARD, ROPE OVER DRUM, COMING IN FROM THE RIGHT (FOR) - ANTI-CLOCKWISE



### FEET FORWARD, ROPE UNDER DRUM, COMING IN FROM THE RIGHT (FUR) - ANTI-CLOCKWISE

